

The new generation of skin friendly wound dressings

Global Health Technology



Winner of Social Care Premier Supplier Healthcare Award 2022.

“Global Health Technology has an innovative approach to developing healthcare solutions to health and social care.

Their ground breaking wound care technology has had a real impact in the sector” says the jury.

Erland Care Protective Skin

Erland Care Protective Skin is a multifunctional wound dressing designed to optimize wound healing. The superabsorbent binds wound fluid and activates fibers that improves healing.



Erland Care Protective Skin

- A suitable dressing, also for those with fragile and sensitive skin

Areas of use:

- ✓ Dry and exuding wounds
- ✓ Arterial wounds
- ✓ Venous leg ulcers
- ✓ Pressure ulcers
- ✓ Diabetic wounds
- ✓ Surgical wounds
- ✓ First and second degree burns
- ✓ Traumatic wounds
- ✓ Peristomal wounds
- ✓ Covering of continent openings
- ✓ Epidermolysis Bullosa

Available in 6 sizes:

5x5 cm
7,5x7,5 cm
10x10 cm
15x15 cm
16x18 cm
5x25 cm

Erland Care Protective Skin 5x25 cm



A silicone dressing designed to be used after surgery. Each dressing can be used for one week.

- ✓ Waterproof
- ✓ Gentle on the skin
- ✓ Thin and light
- ✓ Reduces the visibility of scars
- ✓ UV protection



Silicone dressings are recommended in treatment of Hypertrophic scars and keloids.

Reduces the visibility of scars and minimize the risk of infection

A silicone bandage specially designed for use after surgery, like c-section or heart bypass surgery. Each dressing can be used for one week.

Research shows that 6 months of using a silicone dressing after surgery reduces the visibility of scars and the risk of infection.



Erland Care Protective Skin – Peristomal wounds

Treatment of peristomal wounds/moisture associated skin damage (MASD)

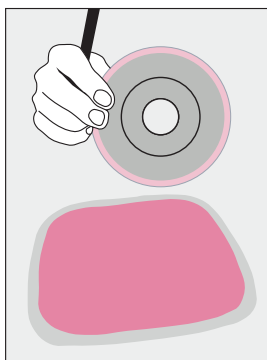
A review of 37 published professional studies in the area provides updated knowledge and new recommendations on the treatment of moisture-associated skin damage. In the article Management of Moisture-Associated Skin Damage: A Scoping Review published in *Advanced Wound Care* in 2017, The use of absorbent bandage is set as a first choice in treatment

Their recommendations of the treatment of moisture associated skin damage (MASD) is:

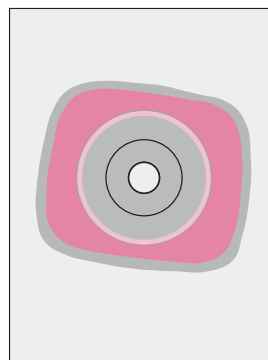
1. Gently wash the skin with neutral soap.
2. Use absorbent dressing for exuding wounds. The dressing should both prevent new wounds and support the healing of existing wounds. Dressings that can absorb heavy amounts of fluid are preferred.

How to use:

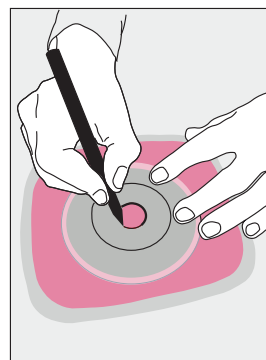
Cut the hole slightly larger than the stoma so that the bandage does not get in touch with the stoma.



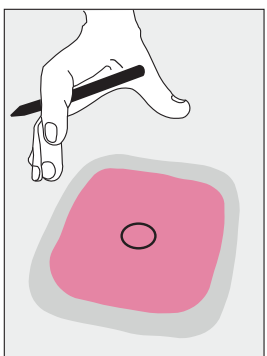
1. Take out a pre-cut skin plate that has been adapted to your stoma.



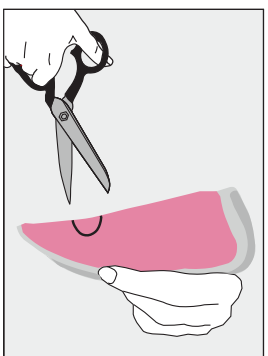
2. Place the skin plate over the Erland Care Protective Skin



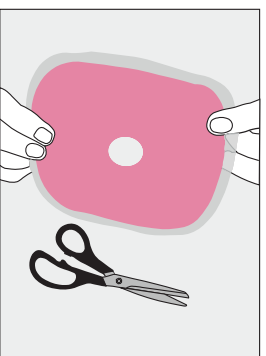
3. Draw a mark of the hole for your stoma



4. Remove the skin plate, after the hole is marked. Find a scissor



5. Fold the skin protection plate in 2, and cut around the marked area.



6. The skin protection plate is ready to be placed on the skin.

«The literature describes that up to 80% of all people with a stoma experience peristomal skin complications, most of which are related to a poor seal around the pouch».

[Colwell et al, 2019]

Erland Care Stoma Pad

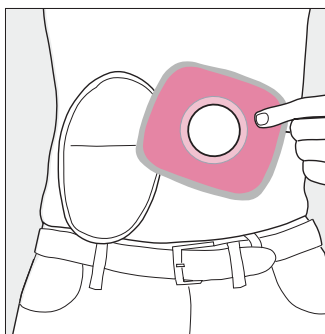
Our patented solution that gives you the safety you need!

The Erland Care Stoma Pad ensures safe and stable attachment of bag and plate, which in turn reduces the risk of leakage under the plate.

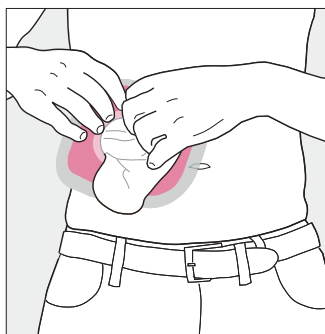
It absorbs leakage and seals it in the superabsorbent. This prevent liquid from getting on the skin, clothes, bedding etc. With perforated silicone as an adhesive the skin is well ventilated and wounds heal better. This also makes it easy to remove after use, even on established wounds.

It can safely be used in water as it is waterproof.

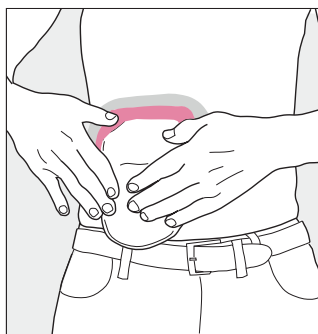
Fits plate sizes 9,5 cm to 10 cm.



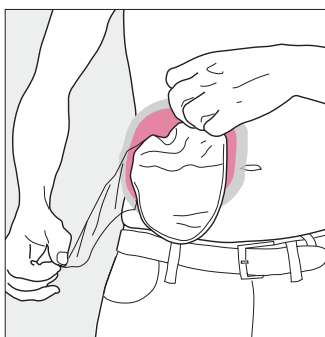
1. Put on the ostomy bag as usual. Remove the Stoma Pad out of the package.



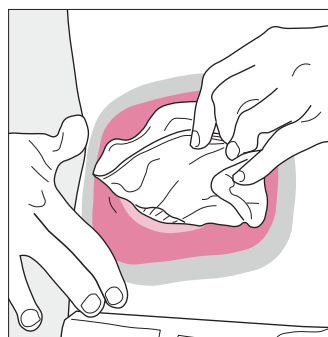
2. Hold the Stoma Pad with the adhesive side against the skin, then pull the bag through the hole.



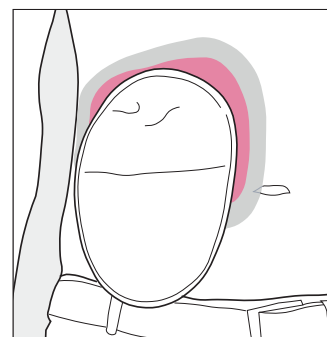
3. When the bag is through the hole, reduce unevenness by smoothing the skin plate on the skin.



4. Remove one of the adhesive protectors and attach the Stoma Pad on the skin. Repeat on the other side.



5. Smooth over the Stoma Pad and check that there are no opening on the sides.



6. The Stoma Pad is ready to use.



SMART



Global Health
Technology



Global Health Technology is a Norwegian company that develops ground-breaking solutions in ostomy and woundcare.

www.globalhealthtechnology.no



www.globalhealthtechnology.no

Global Health Technology AS
Løkkeveien 107-111
4007 Stavanger
Norway

